



## ST700V

### AUTOMATIC SKINNING MACHINE - LONG MODEL

#### MODEL



#### TECHNICAL DATA

FEATURE	DATA
Operators	1-2
Voltage range (1)	220- 480V 50-60Hz
Power (1)	1,6kW/3 ph
Controls	24V
LxWxH (2)	2975 x 1075 x 1257 mm
Weight (3)	407 kg
Working width (2)	480 mm
Water usage	8 l/m
Water connection	1/2"
Air usage	-
Air connection	-
Speed (4)	+/- 21 m per minute

(1) depending on requested voltage

(2) 1mm = 0,03937 inches

(3) 1kg = 2,20462 pounds

(4)  $\left( \frac{2100\text{cm/min}}{\text{length fillet (cm)} + 5\text{cm}} \right) \times 2 = \text{theoretical capacity}$

#### DESCRIPTION

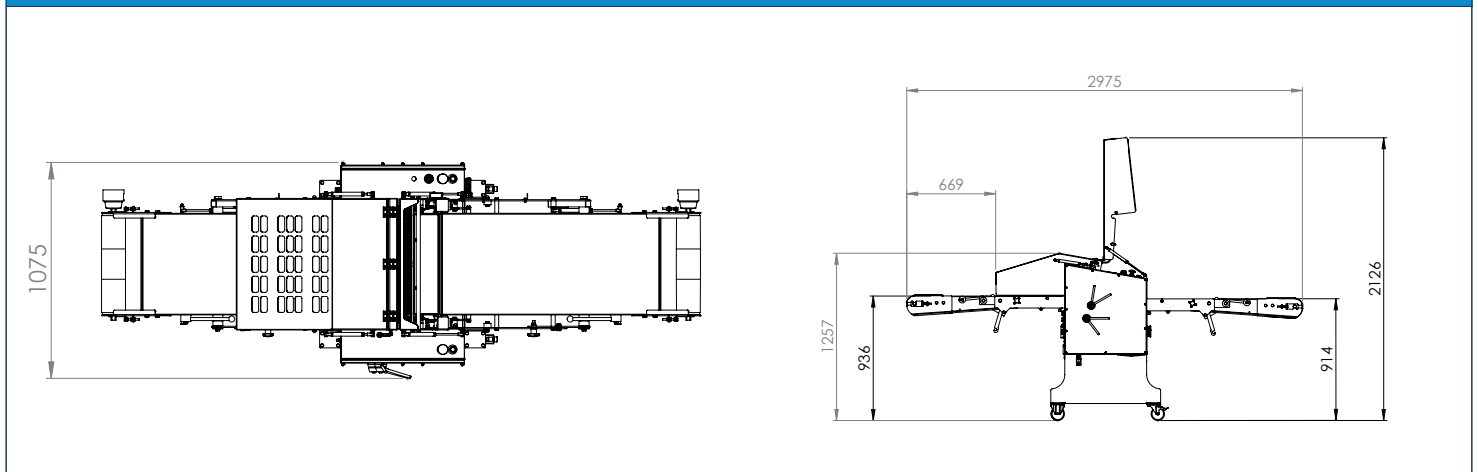
Versatile automatic skinning machine suitable for many fish species and sizes with the possibility to deep-skin. Please check our website and product matrix on the main folder for more information. When ordering, please provide STEEN with the electrical specifications and water connection available. Also inform us which fish species (preferably the scientific name) you would like to process including capacity and general length. Please also indicate if you have any special requirements regarding the product.

Versátil peladora automática, adecuada para muchas especies y tamaños de pescado, con la posibilidad de eliminar la piel profunda. Consulte nuestra web y nuestra gama de productos en la carpeta principal para obtener más información. Al realizar el pedido, proporcione a STEEN las especificaciones eléctricas y la conexión de agua disponibles. También infórmenos de las especies de pescado (preferiblemente el nombre científico) que desea procesar, incluidas la capacidad y la longitud general. Indique igualmente si tiene algún requisito especial con respecto al producto.

Versátil máquina automática para tirar pele de várias espécies e tamanhos de peixe com a possibilidade de tirar pele mais profunda. Consulte o nosso website e matriz de produtos na pasta principal para mais informação. Ao encomendar, indique à STEEN as especificações elétricas e ligação de água disponível. Informe também que espécies de peixe (de preferência o nome científico) desejaria processar, cada uma delas indicando a capacidade e comprimento geral. Convidamo-lo a indicar-nos quaisquer requisitos especiais que possa ter sobre o seu produto.



#### FOOTPRINT



Due to the high degree of customization possibilities, technical data of the final product may vary.



# OPTIONS



## ST700V

AUTOMATIC SKINNING MACHINE - LONG MODEL



700/TABLE

1



Infeed table

700V/INFEED

2



Short infeed conveyor = -546mm

700V/OUTFEED

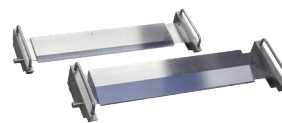
3



Short outfeed conveyor = -549mm

700V/BLADE

4



Extra blade for more possibilities (deepskin)

700V/SPEED

5



Speed regulator

700/3Z100

6

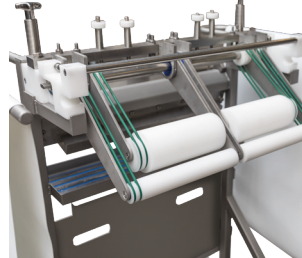


Table for storing knife and dispose blades.

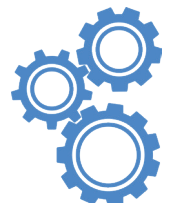
CLEANING



Cleaning mode

CUSTOMIZED

7



Tailor-made solution

*Due to the high degree of customization possibilities, technical data of the final product may vary.*